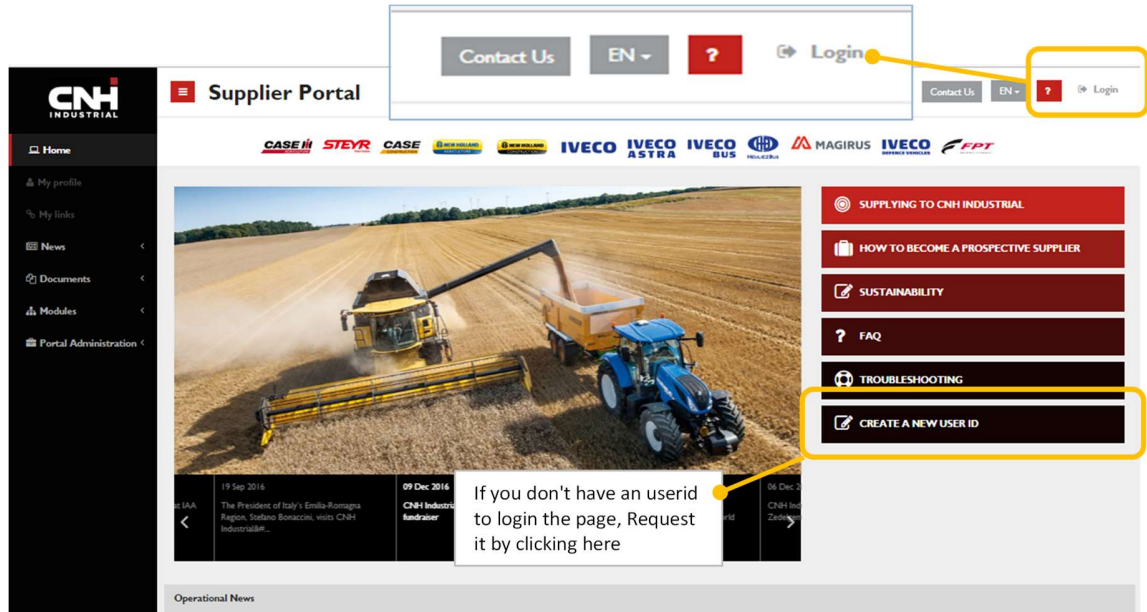
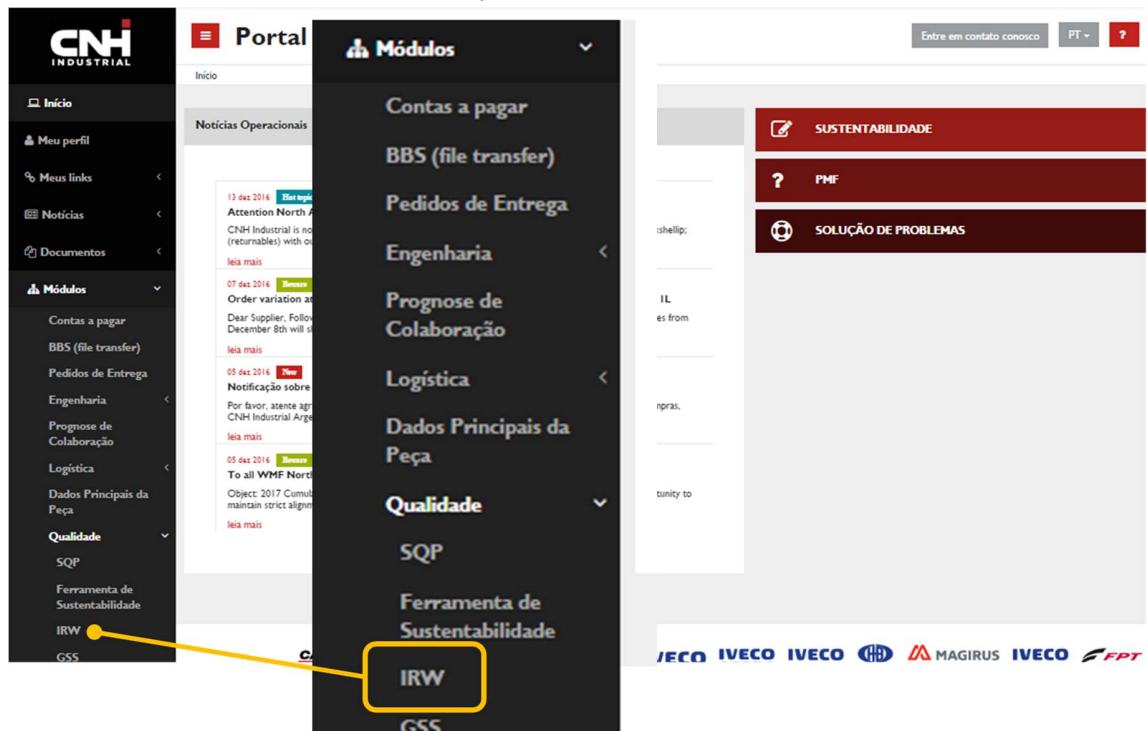


1. Get Access to Supplier Portal , <https://supplier.cnhind.com> and click on Login



2. On the left side, click on Modules/Quality/IRW.



3. In the next window, click on Proceed



5. Fill in the empty fields.

The image shows a screenshot of the 'Interim Recovery Worksheet' form. It is a complex form with various input fields, dropdown menus, and checkboxes. Numbered callouts (1-26) are placed over the form to indicate specific fields or actions. The form is titled 'Interim Recovery Worksheet' and has a header bar with a search icon and a checkmark icon. The form is divided into sections: 'SUPPLIER INFO', 'SEGMENTS & FUNCTIONS', 'REASON FOR INTERIM', 'SUPPLIER CODE', 'PART CODE', 'PLANT', 'PROGRAM', 'PPAP LEVEL', 'RESUBMISSION DATE', 'INTERIM EXPIRE DATE / QUANTITY', 'ECO/CID', 'ECO DATE', 'KEY SAFETY', 'CHARACTERISTICS', 'FUNCTIONAL', 'SQE NAME', 'SAMPLE QUANTITY', 'PKG', 'SREA', 'BRIEF REASONS / DESCRIPTION OF NONCONFORMANCE', 'ISSUES', 'ACTION PLANS', 'WHERE APPLICABLE, ARE INTERIM ISSUES ADDRESSED ON THE STRENGTHENED CONTROL PLAN?', 'TECHNICAL DOCUMENTATION ATTACHED', 'ATTACHMENT', 'SUPPLIER (AUTHORIZED SIGNATURE)', 'PHONE', and 'E-MAIL'.

1. select Customer Sector
2. Select IRW type:
  - 2.1 If the request refers to a part in development, select "On Part not yet Approved".
  - 2.2 If the request refers to a part already in use, select "On Part currently PPAP Approved".
  - 2.3 If the request is intended to request a deviation related to any MDS concerns, select the option "Substance Regulation" (See note 1 for additional instructions)
3. Click on (...) and select your company name (See note 2 for additional instructions)
4. Click on (...) in order to select the right part number. If not present, insert it manually, by typing the Part Code in the field. Do the same for Part Name field.
5. Select customer plant
6. It is a free field. However, for Latin America suppliers, it is requested to report your customer contact and function, to whom you previously agreed to open an IRW.

7. Click on (...) in order to select the affected customer project/platform
8. Select part current PPAP Level
9. Inform PPAP Resubmission date, in the case of parts under development
10. Inform Interim Expire Date or else Maximum Parts quantity , as per previously agreed with customer contact.
11. Write Engineering tracking number and released date (see customer drawing)
12. Drawing Revision level (see customer drawing)
13. Report part classification
14. If different of CNH0, inform number of key/safety characteristics highlighted in the customer drawing.
15. If PPAP level 4 or 5, an additional field will be added to the form. Then, select your Supplier Quality Engineering interface.
16. Inform number of samples to be submitted, if step 9 was filled in.
17. Write SREA tracking number if IRW was preceded by a released Supplier Request for Engineering Approval
18. Detail in this field the non-conformance, any incompliance to customer requirements and/or any risks subject to IRW approval.
19. Describe the situation, reasons that led supplier to request IRW, where problem was raised
20. Describe own actions to recover the gap, due date and responsible (**these 3 inputs are mandatory**)
21. If parts will be subject to unusual/temp operations, report them in this field.
22. Attach documents that support better understanding of the problem and actions. Communications that supported a previous agreement to raise an IRW are also desirable.
23. Write phone contact. Cell phone quite recommended.
24. Write contact email.
25. Click on this button when your request is ready to submission. Once you click on it, request is sent to customer plant.
26. This button will allow you to back to previous Search Page.

Note 1: In the case user selected "Substance Regulation" option, some fields will automatically be frozen and fields 18 and 19 will be automatically fulfilled.

Note 2: In the case you intend to create an IRW intended to a CNH plant (so, it won't be for IVECO or FPT plants), pay attention to the acronyms CN1, CN2, CN3 or CN4 that appear before your main supplier code number. Select the proper code taking into account that:

- Code starting by CN1: IRW's that shall be addressed to a CNH plant in located in Europe.
- Code starting by CN2: IRW's that shall be addressed to a CNH plant in located in North America
- Code starting by CN3: IRW's that shall be addressed to a CNH plant in located in Asia region

- Code starting by CN4: IRW's that shall be addressed to a CNH plant in located in South America

Doubts?

Contact Miss Ana Camargo– [stephanie.magalhaes@cnhind.com](mailto:stephanie.magalhaes@cnhind.com) - +55 41 3207 5741

Optionally: Walter Proenca – [walter.proenca@cnhind.com](mailto:walter.proenca@cnhind.com) - +55 41 999 463 111